



Rabbit anti STAT1 (Paired Y701) Polyclonal Antibody

Alternative Name(s): signal transducer and activator of transcription 1, 91kDa

Order Information

- **Description:** STAT1 (Paired Y701)
- **Catalogue:** 620-170
- **Lot:** See label
- **Size:** 100ug/200ul
- **Host:** Rabbit
- **Clone:** nan
- **Application:** IHC(P), WB
- **Reactivity:** Hu, Ms, Rt

ANTIGEN PREPARATION

A synthetic peptide surrounding to the epitope -TGYIK—without phosphorylation sites at Tyr701 of STAT1 protein from human, mouse and rat origins.

BACKGROUND

STAT proteins (Signal transducer and activator of transcription) belong to a family of cytoplasmic transcription factors that can be phosphorylated by a ligand binding to its cell surface receptor. The phosphorylation of STAT1 at Tyr701 induces STAT1 dimerization, nuclear translocation and DNA binding. STAT 1 is activated by a number of different ligands, including IFN, EGF, PDGF and IL6. Tyrosine 701 phosphorylation impairment results in loss of STAT 1 functions.

PURIFICATION

The Rabbit IgG is purified by Epitope Affinity Purification

FORMULATION

This affinity purified antibody is supplied in sterile Phosphatebuffered saline (pH7.2) containing antibody stabilizer

SPECIFICITY

This antibody recognizes STAT1 without a phosphorylated sites of Tyr701. It does not cross-react with phosphospecific peptide.

STORAGE

The antibodies are stable for 24 months from date of receipt when stored at -20oC to -70oC. The antibodies can be stored at 2oC-8oC for three month without detectable loss of activity. Avoid repeated freezing-thawing cycles.

APPLICATIONS/SUGGESTED WORKING DILUTIONS*

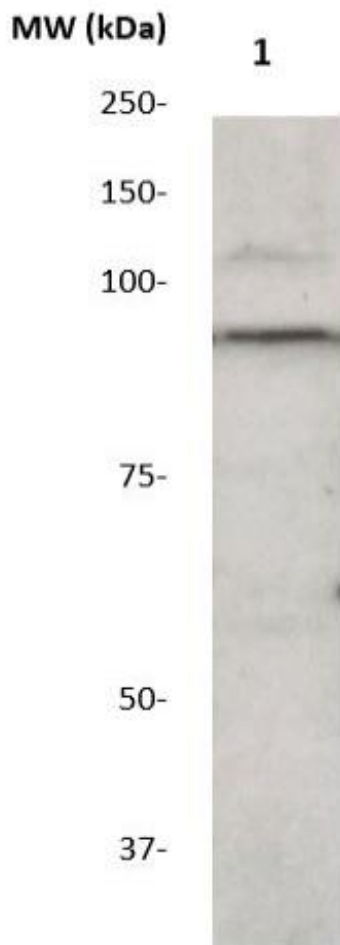
- Western Blot: 0.1-1 µg/ml
- ELISA: 0.01-0.1 µg/ml
- Immunoprecipitation: 2-5 µg/ml
- IHC: 2-10 µg/ml
- Flow cytometry: Not tested
- Molecular Weight: 91.0
- Positive Control: Kidney Tissue
- Cellular Location: Cell Membrane

*Optimal dilutions should be determined by researchers for the specific applications.

FOR RESEARCH USE ONLY.

AbboMax, Inc 2528 Qume Drive, Suite 8, San Jose, California 95131, USA
1 408-573-1898 (Tel). 1 408-573-1858 (Fax). www.abbomax.com info@abbomax.com

DATA ATTACHMENTS



Western Blot: The tissue lysate derived from mouse liver was immunoblotted by Rabbit anti STAT1 (Paired Y701) antibody (Cat#620-170) at 1:500. Observed a major immunoreactive band at molecular weight ~91 kDa.

REFERENCES

FOR RESEARCH USE ONLY.

AbboMax, Inc 2528 Qume Drive, Suite 8, San Jose, California 95131, USA
1 408-573-1898 (Tel). 1 408-573-1858 (Fax). www.abbomax.com info@abbomax.com